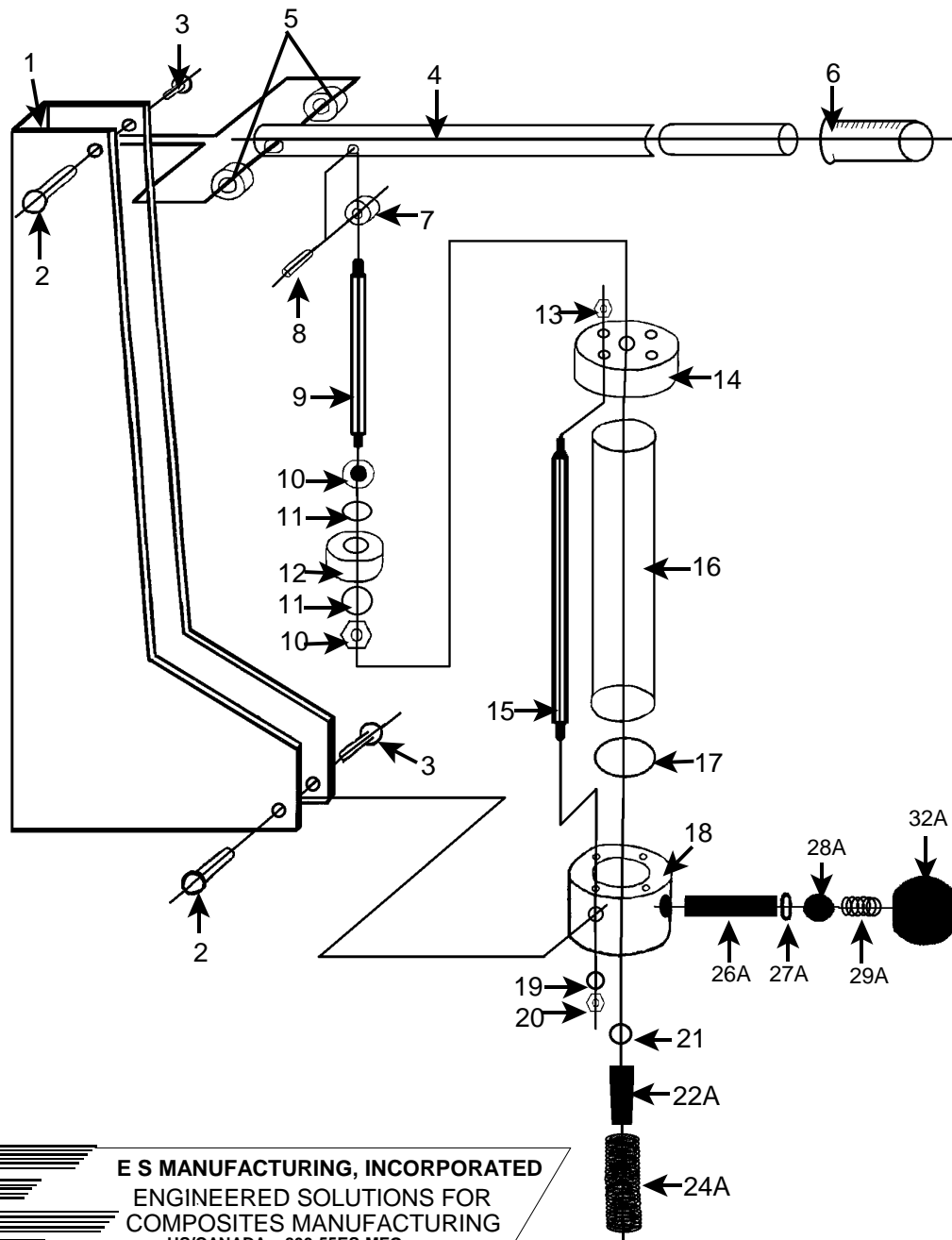


25, 100 & 500cc SWISPUMP DIAGRAM



- | | | |
|-------|--------------|-------------------------------------|
| (1) | SCD-001-100 | Steel Bracket (100CC &500CC) |
| (2) | SCD-002-100 | Steel Bracket Shaft |
| (3) | SCD-003-100 | Steel Bracket Shaft Screws |
| (4) | SCD-004-100 | Catalyst Pump Arm |
| (5) | SCD-005-100 | Plastic Bushing |
| (6) | SCD-006-100 | Catalyst Pump Grip |
| (7) | SCD-007-100 | Aluminum Handle Bushing |
| (8) | SCD-008-100 | Handle Shaft |
| (9) | SCD-009-100 | 100 & 500CC Mea. Cylinder Shaft |
| (10) | SCD-010-100 | 100& 500CC Mea. Cyl. Shaft Nut |
| (11) | SCD-011-025 | 025 CC Suction Plug O' Ring |
| (11) | SCD-011-100 | 100CC Suction Plug O'Ring |
| (11) | SCD-011-500 | 500CC Suction Plug O'Ring |
| (12) | SCD-012-100 | 100CC Suction Plug |
| (12) | SCD-012-025 | 25CC Suction Plug |
| (12) | SCD-012-500 | 500CC Suction Plug |
| (13) | SCD-013-100 | Connecting Shaft Upper Nut |
| (14) | SCD-014-025 | Upper Cylinder Housing 25CC |
| (14) | SCD-014-100 | Upper Cylinder Housing 100CC |
| (14) | SCD-014-500 | Upper Cylinder Housing 500CC |
| (15) | SCD-015-100 | Housing Connecting Shaft |
| (16) | SCD-016-100 | 100CC Measuring Glass Cylinder |
| (16) | SCD-016-500 | 500CC Measuring Glass Cylinder |
| (17) | SCD-017-025 | Glass Cylinder O'Ring (25CC) |
| (17) | SCD-017-100 | Glass Cylinder O'Ring (100CC) |
| (17) | SCD-017-500 | Glass Cylinder O'Ring (500CC) |
| (18) | SCD-018-025 | Lower Cylinder Housing (25CC) |
| (18) | SCD-018-100 | Lower Cylinder Housing (100CC) |
| (18) | SCD-018-500 | Lower Cylinder Housing (500CC) |
| (19) | SCD-019-100 | Connecting Shaft Washer |
| (20) | SCD-020-100 | Connecting Shaft Nut |
| (21) | SCD-021-100 | Intake Ball Bearing (25 & 100CC) |
| (21) | SCD-021-500 | Intake Ball Bearing (500CC) |
| (22A) | SCD-022A-100 | 100CC &25CC Barb |
| (22A) | SCD-022A-500 | 500CC Barb |
| (24A) | SCD-024A-100 | Hose for 25 & 100CC |
| (24A) | SCD-024A-500 | Hose for 500CC |
| (26A) | SCD-026A-100 | Material Shaft 25/100CC |
| (26A) | SCD-026A-500 | Material Shaft 500CC |
| (27A) | SCD-027A-100 | Material Shaft O'Ring (25 & 100CC) |
| (27A) | SCD-027A-500 | Material Shaft O'Ring (500CC) |
| (28A) | SCD-028A-100 | Mat. Shaft Ball Bearing (25& 100CC) |
| (28A) | SCD-028A-500 | Material Shaft Ball Bearing |
| (29A) | SCD-029A-100 | Material Shaft Spring (25 & 100CC) |
| (29A) | SCD-029A-500 | Material Shaft Spring (500CC) |
| (32A) | SCD-032A-100 | Mat. Shaft Fluid Nozzle (25& 100CC) |
| (32A) | SCD-032A-500 | Material Shaft Fluid Nozzle (500CC) |

E S MANUFACTURING, INCORPORATED
 ENGINEERED SOLUTIONS FOR
 COMPOSITES MANUFACTURING
 US/CANADA 800-55ES-MFG
 727-323-4040 FAX 727-327-9872
 E-MAIL: sales@esmfg.com